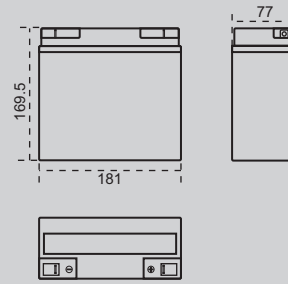


# 12 EV 20 (12V 20Ah)



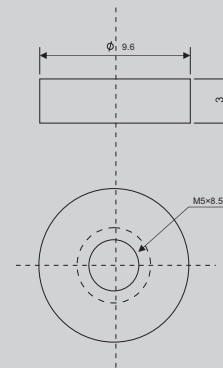
## Outer Dimensions (mm)



## Specifications

Nominal Voltage		12 V
Rated Capacity (5 Hour Rate)		20 Ah
Dimensions	Total Height	169.5 mm
	Height	169.5 mm
	Length	181 mm
	Width	77 mm
Terminal		F1
Container Material		ABS (UL94-HB/V0)
Weight Approx (±2.5%)		7.3 Kg

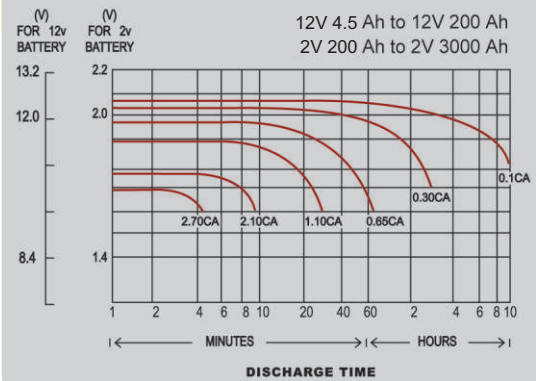
## Terminal Type (mm)



## Characteristics

Capacity 25°C (77°F)	5 hour rate	20 Ah
	3 hour-rate 1 hour-rate	17.7 Ah 13.1 Ah
Internal Resistance	Full Charge Battery at 25°C (77°F)	10.5 m
Capacity Affected by Temperature (10 Hour Rate)	35°C	20.3 Ah
	25°C	20 Ah
	0°C	17.1 Ah
	-10°C	14.2 Ah
Self-Discharge at 25°C (77°F)	Capacity After The 3 Month of Storage	91 %
	Capacity After The 6 Month of Storage	82 %
	Capacity After The 12 Month of Storage	64 %
Charge Constant Voltage	Cycle	Voltage 2.40-2.45 / Cell
	Float	Voltage 2.23-2.28 / Cell

## Discharge Curves 25°C (77°F)



## Discharge and Final Voltage Table According to IEC60254 Standard

Discharge time	1 h	3 h	5 h		
Final voltage	1.61 VPC	1.68 VPC	1.70 VPC		

## Constant Current (A) Discharge Table at 25°C (77°F)

Amount of Current (A)	Discharge Time					
	1 h		3 h	5 h		
	13.1		5.9	4		